

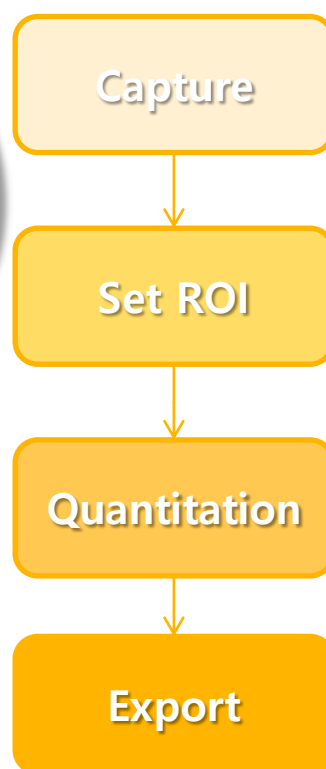
# CheBI

Chemi-luminescence Bioimaging Instrument

CheBI

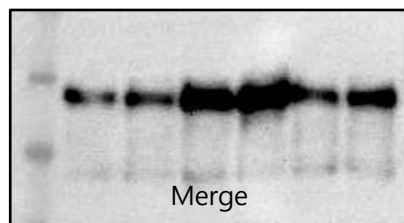
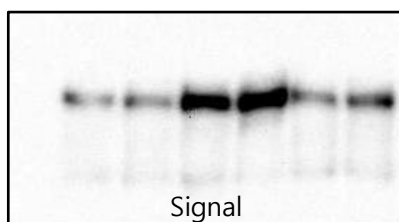


The most simple  
Chemi-doc



You don't need darkroom for Western blotting anymore!!

CheBI is optimized for Western blot research, using the highly efficient Cooling CCD Camera. Its compact size (260 x 260 x 400mm) helps make better use of a space in the laboratory. Its exposure time can be set by the users manually or it can be calculated automatically. Also, the shots can be accumulated which enable users to choose the best shot. Users can select a certain Region Of Interest (ROI), measure the ROI and manage the data using Microsoft Excel.



- ✓ Compact Size
- ✓ Easy to use
- ✓ Manual, automatic, accumulate exposure type
- ✓ Choose the best shot from accumulated shots
- ✓ Merge pictures together
- ✓ Set ROI, quantify data and export

## Specifications

Resolution	6.1 Mega pixel
Camera cooling	Ambient - 40°C
Working temperature	0 ~ 60°C
Size (WxDxH)	260 x 260 x 400mm
Interface connector	Standard USB 2.0
Field of View	220 x 180mm
Exposure type	Manual or Accumulate
Maximum exposure time	30 min
Data backup	Save the backup data at the same time
Measurements	ROI area, intensity and integrated density
ROI setting	Manually or automatically